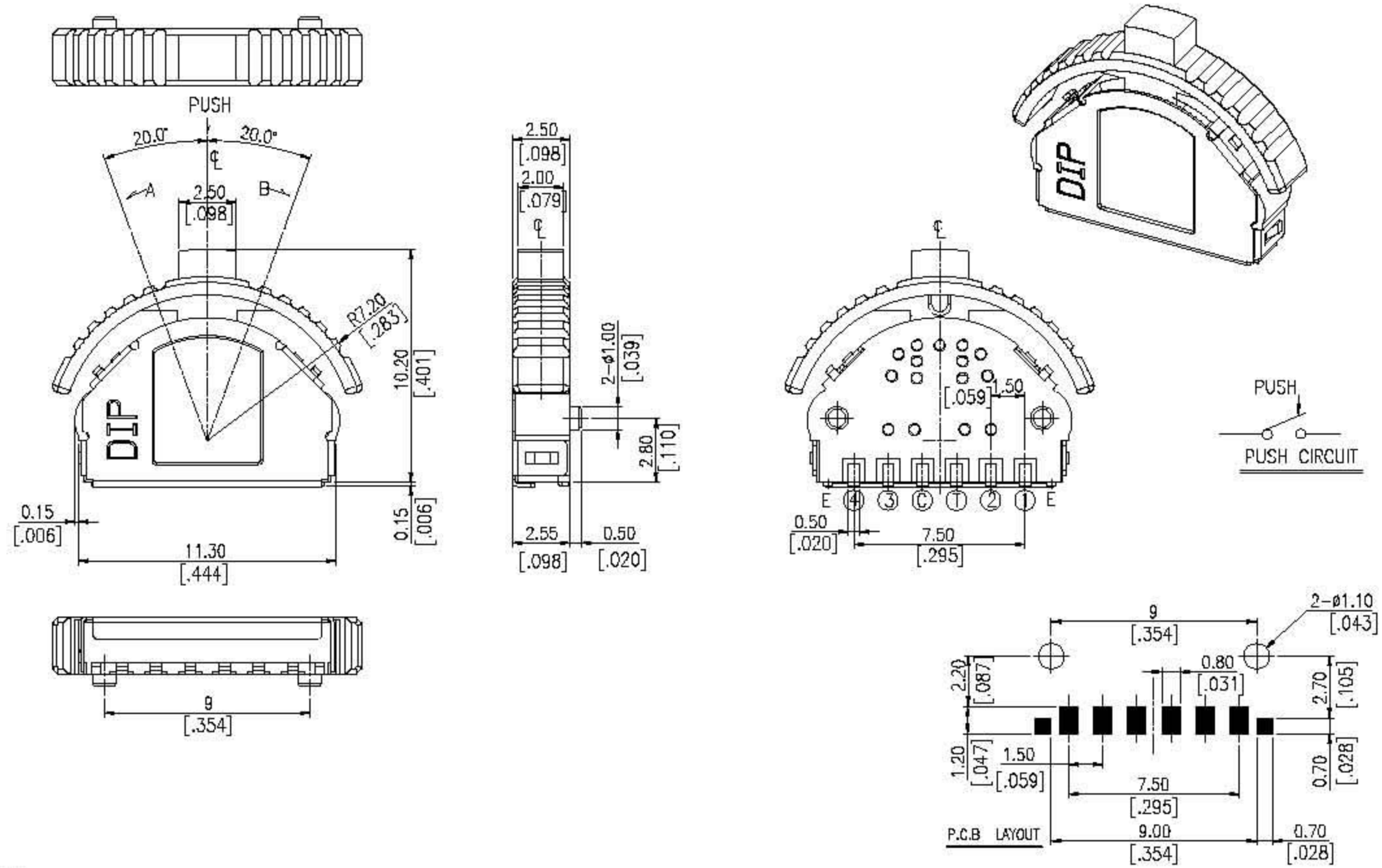


# PUSH & LEVER SERIES



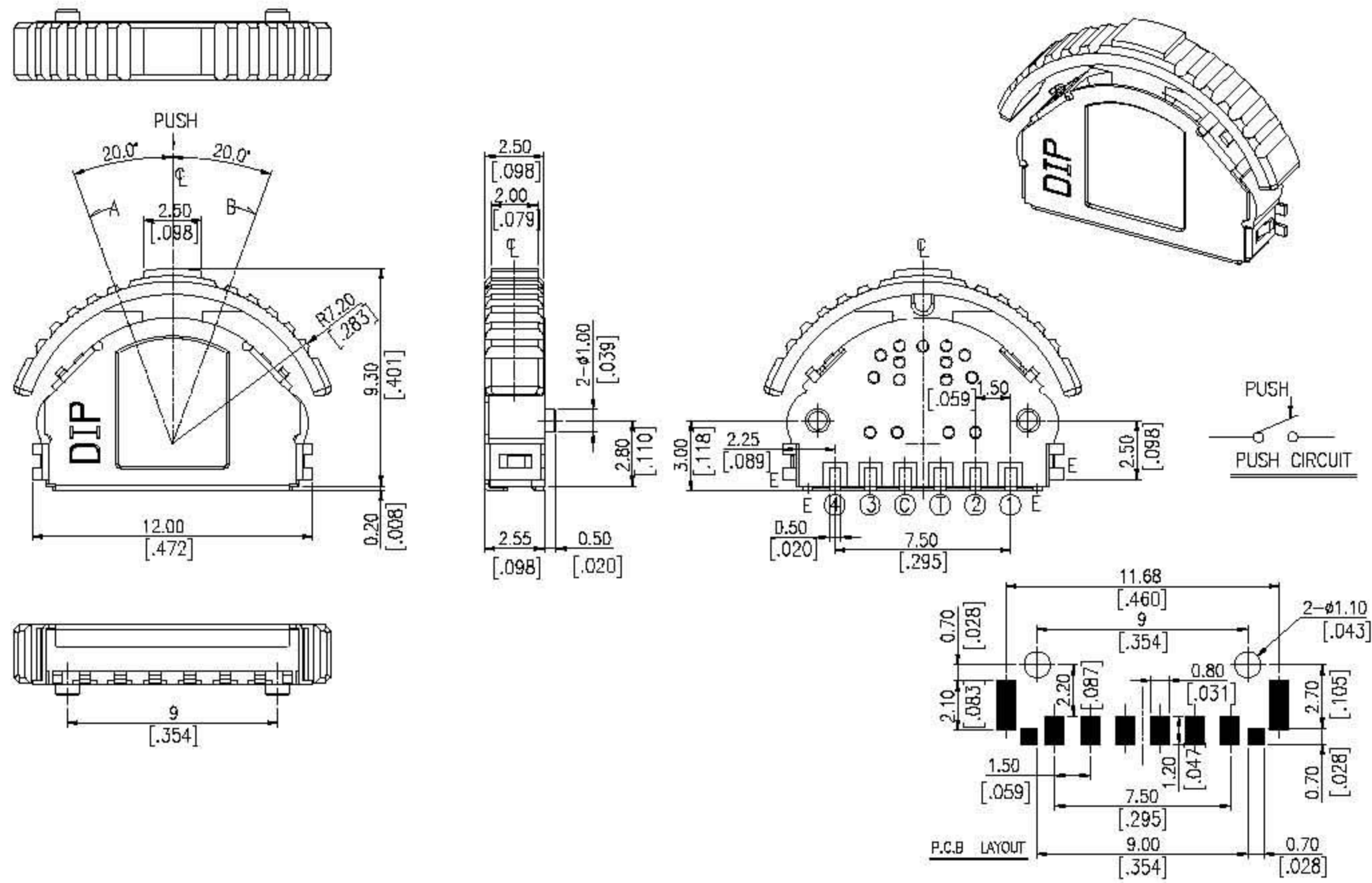
## DIMENSIONS

PLJH



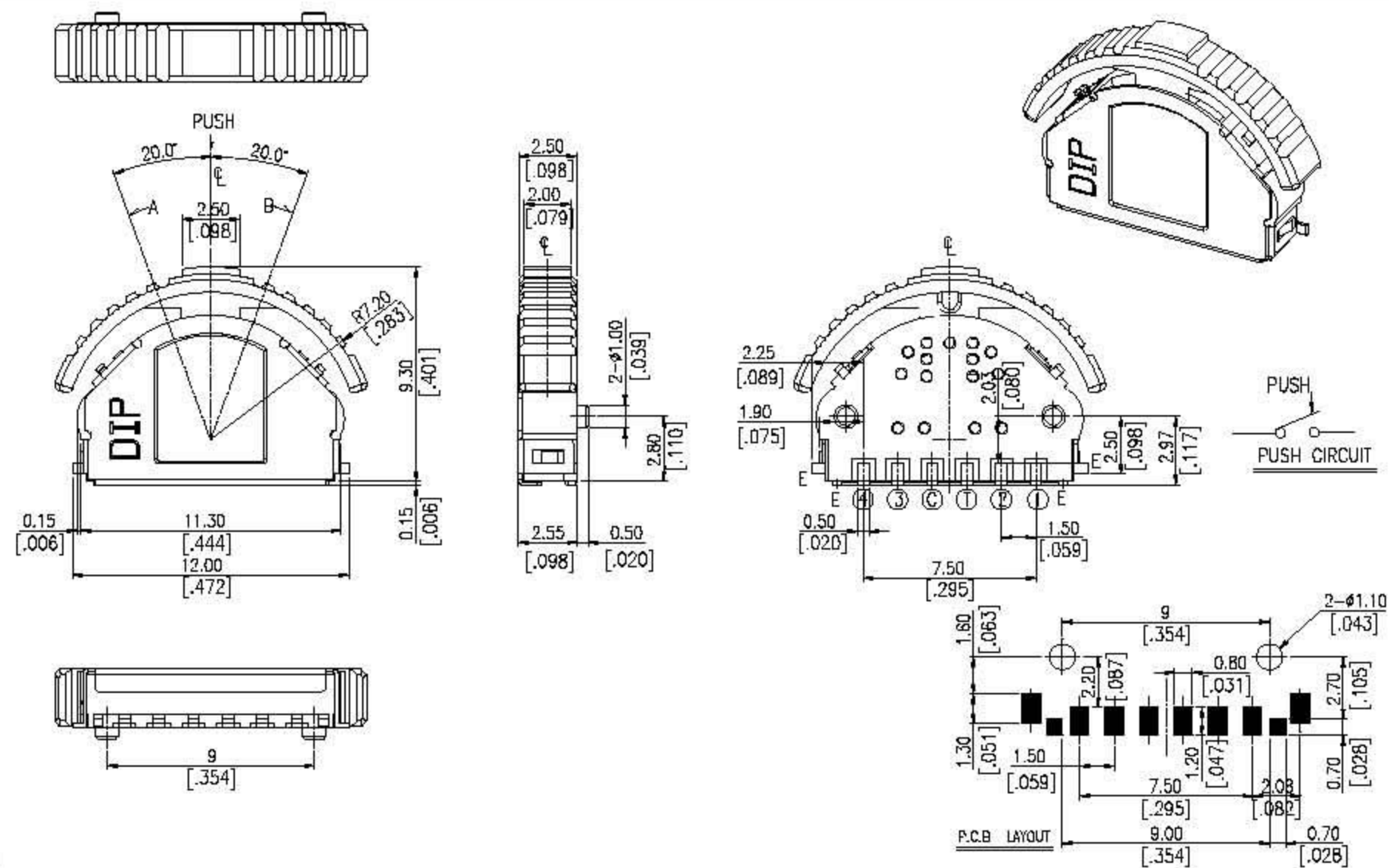
General Tolerance :  $\pm 0.20\text{mm}$

PLJG1



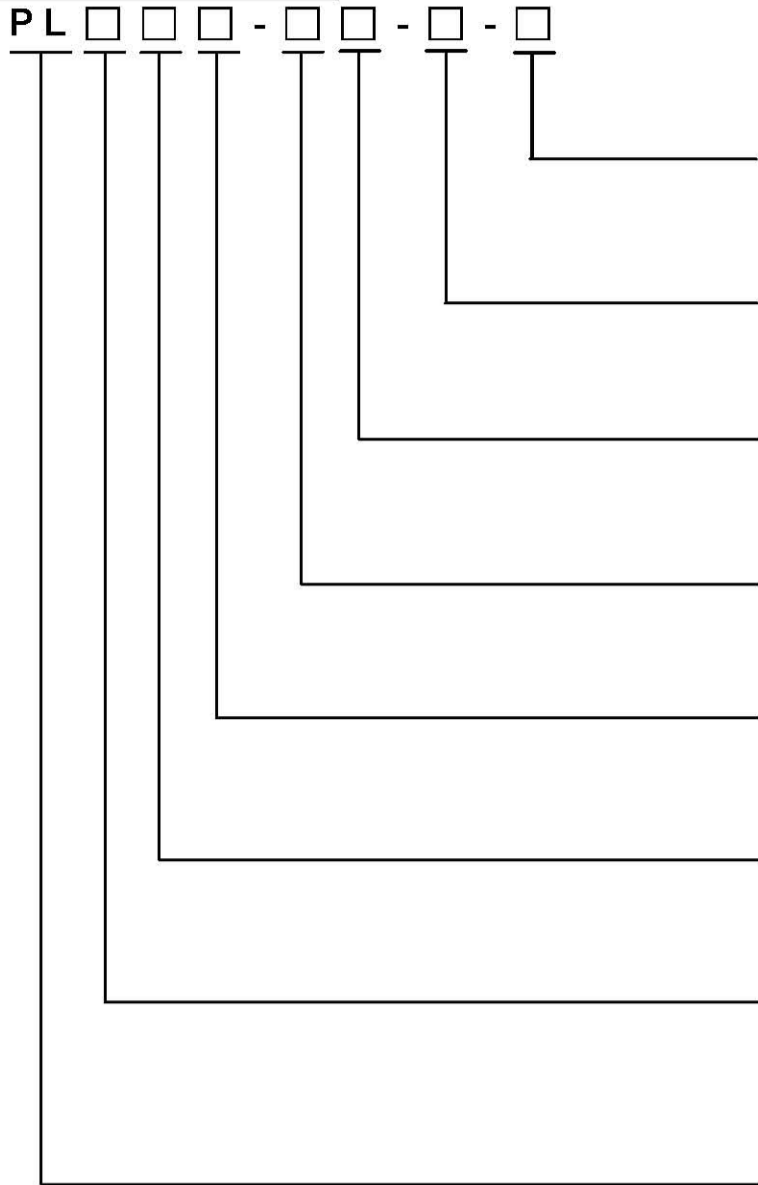
General Tolerance :  $\pm 0.20\text{mm}$

PLJG



General Tolerance :  $\pm 0.20\text{mm}$

# HOW TO ORDER



**Package Style :**  
 = Tape & Reel

**Soldering :**  
**V = Lead Free Solderable**

**H = High Actuator**  
 = Standard

**G = Gray**  
**K = Black**

= Two Ground Pins  
**1 = Four Ground Pins**

**G = Ground Terminal**  
 = Without Ground Terminals

**Termination Type :**  
**J = S.M.T J BEND Terminals**

**Push & Lever Switch**

ANGLE	A		B			
TERMINAL NO.	20°	(16°)	(8°)	(8°)	(16°)	20°
①	[Hatched]					
②	[Hatched]					
③						[Hatched]
④					[Hatched]	[Hatched]
⑤	[Hatched]	[Hatched]	[Hatched]	[Hatched]	[Hatched]	[Hatched]

\*E : ERTHING TERMINAL  
 \*■ : ON POSITION

CIRCUIT DIAGRAM

## SPECIFICATION

### △MECHANICAL

Mechanical Life: 100,000 operation cycles  
 Operation Force: (A) Force on return actuator  
 (A) 40 ±20gf.  
 (B) Force on center push direction  
 (B) 150±50gf.

Operation Temp: -10°C to +70°C  
 Storage Temperature: -25°C to +80°C

### △ELECTRICAL

Electrical Life: 100,000 operation cycles  
 Non-switching Rating: 100mA, 50VDC  
 Switching Rating: 10mA, 5VDC  
 Contact resistance: (a) 100mΩ max. at initial  
 (b) 200mΩ max. after life test

Insulation Resistance: 100MΩ min. 100VDC  
 Dielectric Strength: 100VAC/ minute

Capacitance : 5pF max.

Circuit: Single pole single throw.

## MATERIAL

△COVER: Stainless Steel

△BASE: UL94V-0 PPS Thermoplastic

Color: Brown

△STEM: UL94HB Nylon Thermoplastic

Color: Gray, Black

△CONTACT DISC: Phosphor bronze with silver cladding at contact surface

△TERMINAL: Phosphor bronze with silver cladding at contact surface

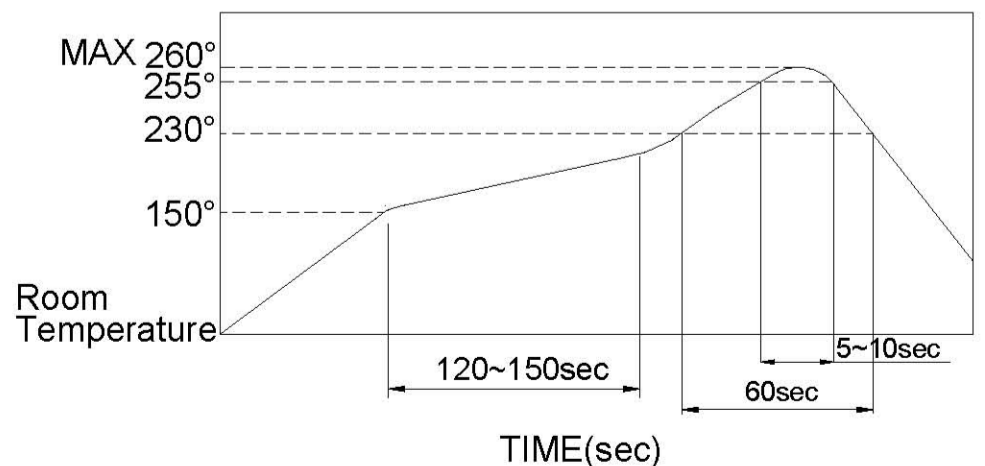
△SPRING: SWP or SUS

## SOLDERING PROCESSES

For best results, please follow these recommendations: △ Temperature Profile:

△HAND SOLDERING : Use a soldering iron of 30 watts, Controlled at 350°C approximately 5 seconds while Applying solder.

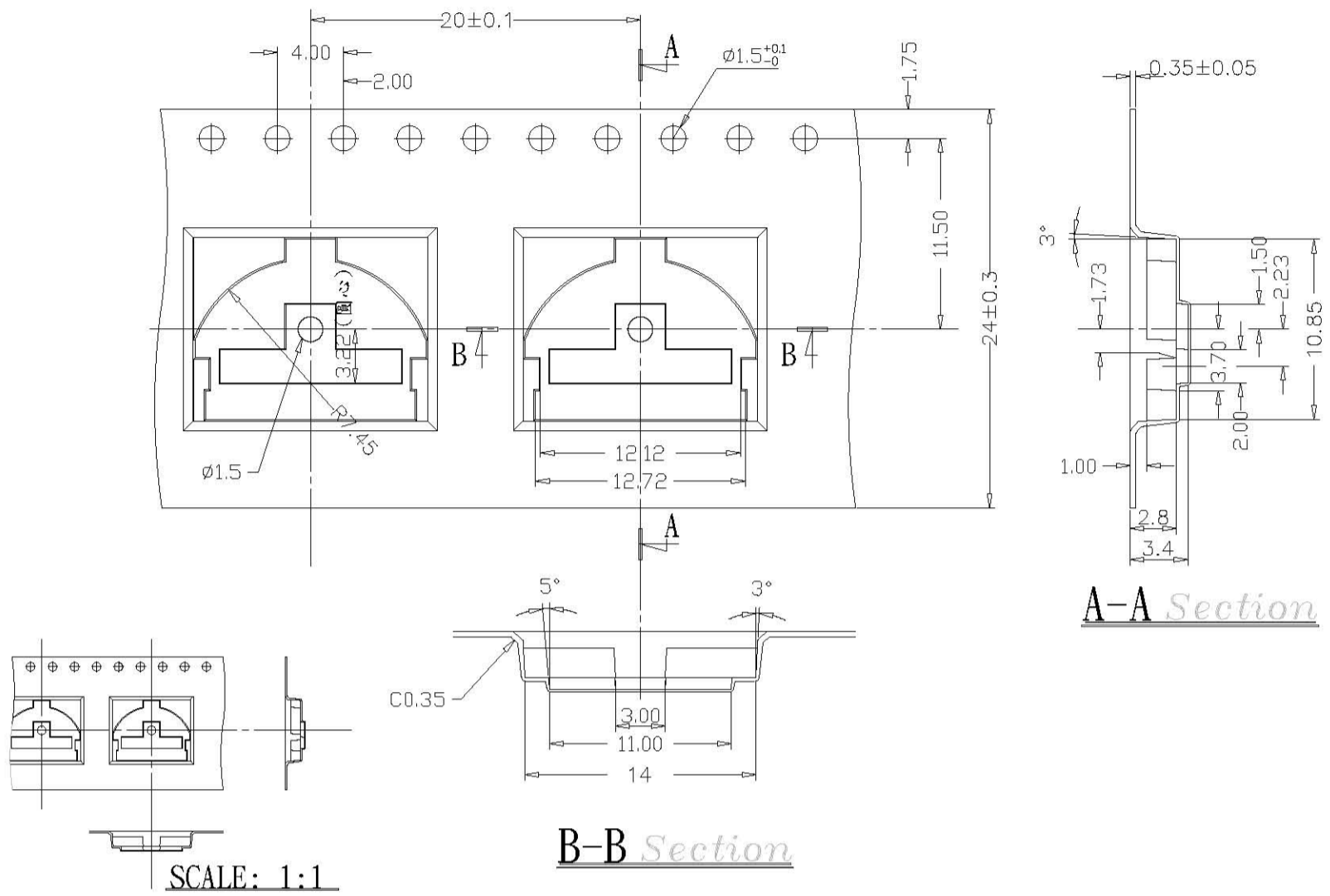
△REFLOW SOLDERING: When applying reflow soldering the peak temperature of the reflow oven should be set to 260°C max.



# PACKING

PLJ-□H REEL

Part Number	Number Per Tube	Number Per Reel
PLJ	-	1000



General Tolerance :  $\pm 0.1$ mm